

Brazil: Amazon & Pantanal Itinerary

[Link: Brazil: Amazon & Pantanal](#)

Tour Overview

On our Brazil: Amazon & Pantanal birding tour, we will experience some of Brazil's richest birding and wildlife regions including the legendary wetlands of the Pantanal, the dramatic canyonlands of Chapada dos Guimarães, and the astonishing biodiversity of the Amazon rainforest. This tour offers exceptional species diversity, superb photographic opportunities, and a true immersion in wild Brazil—where every day brings new habitats and unforgettable encounters.

We begin in the Pantanal, the largest and most important wetland in South America, literally teeming with birds! Herons, egrets, storks including Jabiru, ibis, waterfowl, and spoonbills occur in wonderful abundance. The Pantanal is also famous for mammals, including capybara, giant otter, tapir, and offers one of the best chances anywhere to spot the iconic Jaguar in the wild. This region is also home to one of the world's most resplendent birds, the huge, impressive Hyacinth Macaw!

From the wetlands, we move into the striking escarpments and waterfalls of Chapada dos Guimarães, where the cerrado savanna and canyon landscapes host a completely different suite of species—including endemics and the bizarre, must-see Streamer-tailed Tyrant.

Finally, we venture into the Amazon rainforest, where biodiversity reaches its peak. Birding here is thrilling and ever-changing, with possibilities ranging from canopy flocks to secretive forest specialties—plus the exciting chance of encountering Harpy Eagle or Crested Eagle.

With a carefully paced itinerary, knowledgeable local support, and outstanding habitat variety, this tour is a standout for anyone seeking Brazil's most iconic birds and wildlife in one remarkable journey.

Itinerary

Day 1: Arrival in Cuiaba



Our Brazil Amazon & Pantanal birding tour starts in Cuiaba where we meet for an evening meal to discuss our upcoming adventure. Night in Cuiaba.

Days 2 - 4: Sao Jose do Rio Claro



We have a half-day drive to Sao Jose do Rio Claro, where we will have two full days to explore spectacular area. This area has very high biodiversity in a rainforest setting, truly a part of the Amazon Rainforest. Some of the birds we will look out for are Cone-billed Tanager (found in very few other places in the world), Razor-billed Curassow, Ocellated Poorwill, Green-tailed Goldenthrout, Blue-cheeked Jacamar, White-throated and Rufous-faced Antbirds, Rufous-tailed Flatbill, Greater Yellow-headed Vulture, Point-tailed Palmcreeper, Red-necked and Chestnut-eared Aracaris, Bare-necked Fruitcrow, Black-crowned and Masked Tityras, Spotted Puffbird, White-banded Swallow, Black Caracara, Black-eared Fairy, Swallow-winged Puffbird, Black-girdled Barbet, Scaled Pigeon, Laughing Falcon, Red-bellied, Red-shouldered Macaws and Blue-and-Yellow Macaws. There is even a possibility of seeing Harpy or Crested Eagle. From the lodge we will be able to take boat trips to explore the surrounding rainforest. While here, we will also visit a Wolf Sanctuary in the hopes of spotting a maned wolf (Lobo Guar). Sightings are not guaranteed, but chances are quite high. Nights (3): Cunhataipora Lodge

Days 5 - 7: Chapada dos Guimaraes National Park



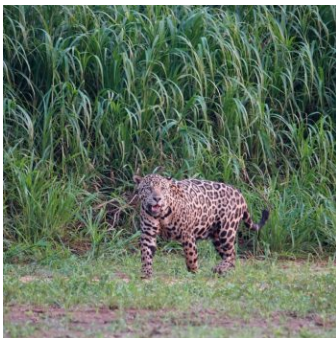
After some morning birding at Jardim da Amazonia, we will transfer to Chapada dos Guimaraes National Park, where we will have two full days of birding. The scenery in this magnificent park is astonishing! Situated at the western edge of the Planalto do Mato Grosso, the canyonlands and waterfalls of this park are truly impressive. We can expect a wide diversity of wildlife, from macaws to hummingbirds. We search for some of the endemics of the Cerrado (dry scrub savanna), including White-rumped and White-banded Tanagers, Collared Crescent-chest, Plumbeous Seedeater, Black-throated Saltator, and Campo Suiriri. Nights (3): Chapada dos Guimares (Pousada Quineira).

Days 8 - 9: Birding and boat rides in the Pantanal



On Day 8, we transfer to the Pantanal, making birding stops along the way. Here birds throng the wetlands; we will especially look for scarcer species such as the shy Plumbeous Ibis, Maguari Storks and Rufescent Tiger-herons. Raptors are seemingly everywhere: Lesser Yellow-headed Vultures, Crane, Black-collared and Roadside Hawks, Gray-headed and Snail Kites and more. On slightly higher ground, gallery forests have taken hold, and are often alive with wildlife. It is in these forests that we search for Toco Toucans, Bare-faced Curassows, and Chestnut-bellied Guans. As well as these spectacular birds, we may see Great Rufous Woodcreeper and White Woodpecker in this area. The forest walks should reveal many birds including Mato Grosso Antbird, Helmeted Manakin, and Large-billed Antwren. We are likely to encounter several flycatchers, ground-doves including Long-tailed, horneros, cardinals and seedeaters, and possibly White-naped Xenopsaris. On our boat rides, we will find more of the Pantanal specialties and wetland species including Jabiru, all five South American Kingfishers, and perhaps the colorful Agami Heron. Nights (2): Hotel Pantanal Mato Grosso

Days 10 - 11: Porto Jofre

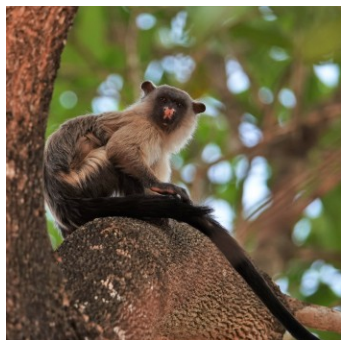


We head to Porto Jofre for the next 2 nights. We will take a morning boat trip, a highlight of the tour. We have a good chance of seeing a Jaguar; the Pantanal jaguar is actually larger than the Amazonian one. We explore the margins of the river in search of this great cat, as well as other impressive fauna and flora. After an afternoon break for lunch, and perhaps a siesta, we will return to the river for an afternoon boat trip. Between the two boat trips, we should end up with an impressive array of birds, possibly including Sunbittern and Sungrebe, and in dry scrub and woodland on the river banks Cinereous-breasted Spinetail, Peach-fronted Parakeet, Turquoise-fronted Parrot, Rufous-tailed Jacamar and Pearly-vented Tody-Tyrant. There could also be caimans, capybaras, Giant Otters and probably a few other mammal and reptile species, maybe even anacondas! Nights (2): Porto Jofre (Santa Rosa Hotel).

Day 12: Piuval Lodge

After breakfast, we transfer to the Piuval Lodge for the night. In the evening we will take an open truck safari to observe nocturnal creatures. Possible sightings include Common Pauraque, Little Nightjar, Spot-tailed Nightjar, Great Potoo, Crab-eating Fox, Crab-eating Raccoon, and Brazilian Tapir. Night (1): Piuval Lodge

Day 13: Morning birding then transfer to Cuiabá



After some early morning birding and lunch, we will transfer to Cuiaba. We will spend our final evening reviewing our checklists and reflecting on our amazing trip over a delicious dinner. Night in Cuiaba (Hotel Amazon).

Day 14: Departure from Cuiaba

Breakfast and transfer to the Cuiaba airport where our Brazil: Amazon & Pantanal birding tour ends, and connections made for flights home. Participants can book their flights home anytime today.

What to Expect

Overview

The Brazil tour is a moderately paced birding tour. You can expect most days to have early starts, as it is desirable to be in a good habitat by daybreak when bird activity and song are at their peak. We will spend the majority of the day birding, although we may take a short break in the heat of the day. There might be an opportunity for a night excursion to look for nocturnal wildlife.

Food

We often will have an early breakfast before heading out, but on some occasions the group may decide to go birding before breakfast, and come back to the lodge to eat. Some days we will take a picnic lunch in the field, or en route to another location, to allow for flexibility in our schedule, but most meals will be taken at the lodges. Each evening after dinner we compile the day's checklist, review the day's activities, birds, mammals and other observations, and plan the next day's activities.

Accommodation

Generally we stay in comfortable lodges, in remote locations, but next to the best birding areas.

Walking

The walking on this tour is rated easy to moderate. We will go at a very slow pace in mostly flat terrain, although it could possibly be muddy in places. We could spend up to four hours walking, such as when we are on the Jatobá trail at Jardim da Amazonia, a roughly 5 km (3 mile) walk.

Driving

We have several days of long drives lasting 4 to 5 hours each. We will be sure to have multiple rest stops and birding stops throughout the journey. Our route will take us along the Transpantaneira Road. While this road is classified as a highway, it's important to note that it is in fact a wide gravel road, and in certain sections the terrain may be rough. Please bring appropriate travel medication if this is something that you usually take.

Climate

The weather will be rather hot and humid with a mixture of sun and cloud and occasional drizzle or rain. Stout, waterproof footwear is an advantage, and as with any South American destination, mosquito repellent, sunglasses and a wide brimmed waterproof hat are highly recommended.

Boat Trips

We will have a few boat trips on small motorized boats, which are often the highlight of the tour. Conditions on the water are calm. These boat trips are usually 3-4 hours in length each. Please note there are no bathrooms on board.

What's Included

Tour Price Includes

- All accommodations (comfortable hotels in good birding locations)
- All meals and soft drinks
- Airport transfers
- Ground transportation (Bus or van with driver and AC)
- Airport transfers
- Boat rides - 3 locations
- Night safari in open truck
- Eagle-Eye Tours guide + a local guide with 5 - 12 participants
- All park, conservation, entrance fees

Tour Price Does Not Include

- Travel to and from start/end location
 - Travel Insurance
 - Items of a personal nature
 - Alcoholic beverages
-